

Linear actuator V121



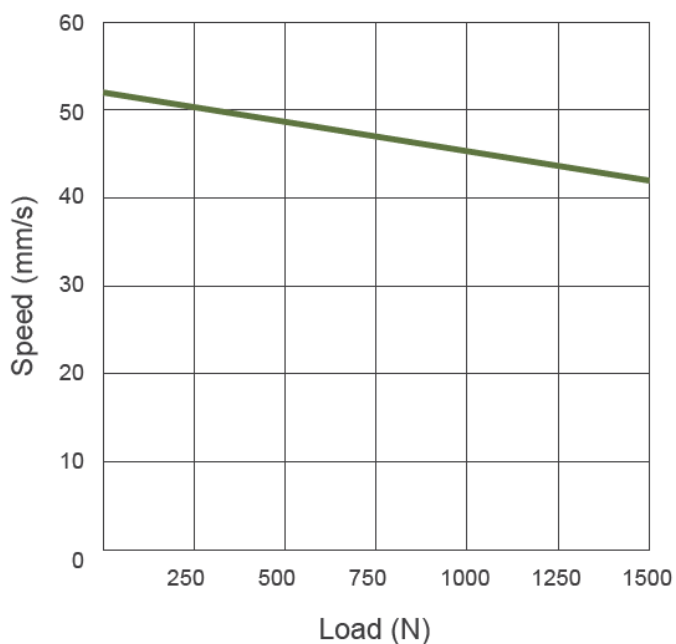
TECHNICAL SPECIFICATIONS

Input voltage	24 Volts DC
Max. force	Push : 1500 N Pull : 1500 N
Stroke	< 333 mm Present limit switches
Noise Level	<55dB
Speed	Maximum 52mm/sec without load Maximum 42mm/sec with full load
Compatibility	HB / H2G / TPSG HR / HS02 / HZ02 / HZ03 / HZ04 / HZ05 / HZ06 TSW1 switching mode power supply
Duty cycle	10% (2 mn operation/ 18 mn rest)
Ambient operation temperature	-20°C ~ +65°C
Color	Black
Standards certification	Marquage CE, directive CEM 2014/30/EU

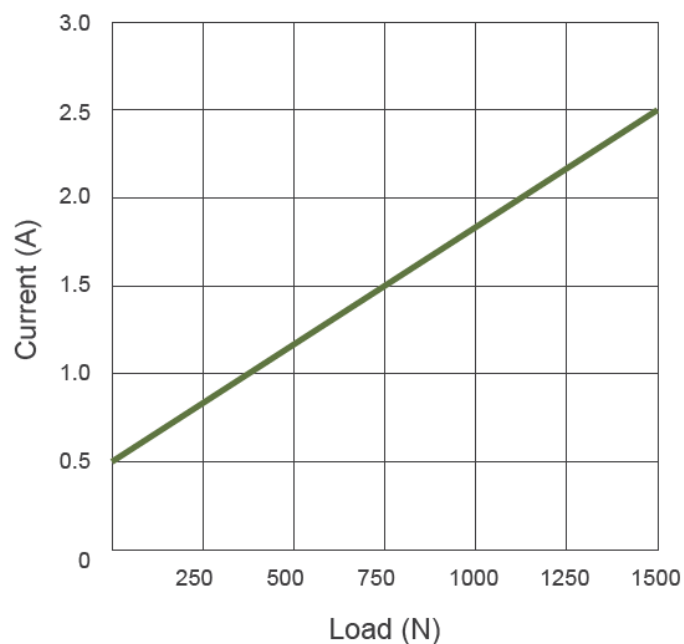
PERFORMANCES

Push Max. (N)	Pull Max. (N)	Typical Speed (mm/s)		Typical Current (A) @ 29V	
		No load	Full load	No load	Full load
1500	1500	52	42	0.5	2.5

Speed vs. Load



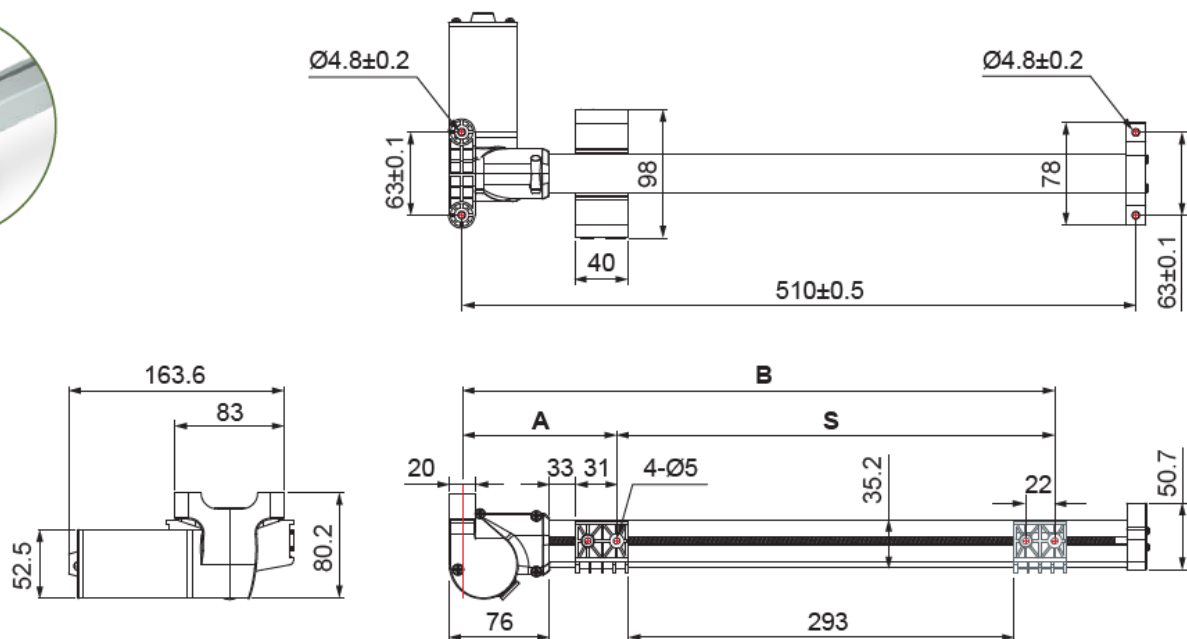
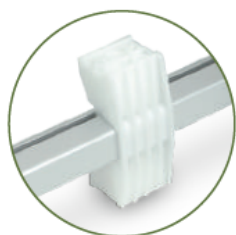
Current vs. Load



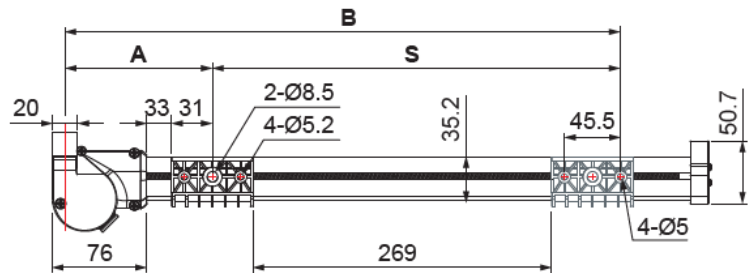
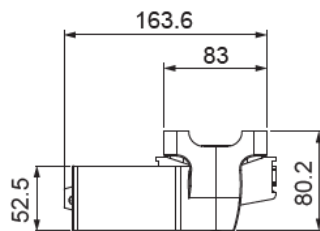
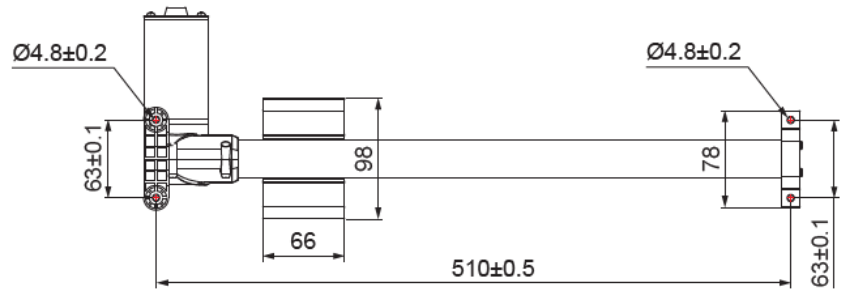
DIMENSIONS

Nut type

- A-type plastic nut



- C-type plastic nut



Installation Dimension

Nut type	Retracted length (A)
A, C	$A \geq 130\text{mm} (\pm 3\text{mm})$

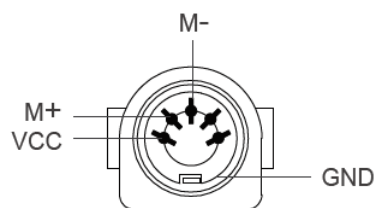
Available stroke (S) range = 50 ~ 333mm ($\pm 3\text{mm}$)

Extended length (B) = A + S

Two fixing points dimension = 510mm ($\pm 0.5\text{mm}$)

CABLE PLUG

Hand control connector with U-type female connector

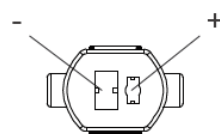


5-pin connector (Moteck pinout: C-DIN-51R)

Note:

Connect pin (M+) to "+" & pin (M-) to "-" of DC power, the actuator will extend.

Power Plug : with S-type DIN 41529 male plug



DIN 41529 plug



U-type

S-type