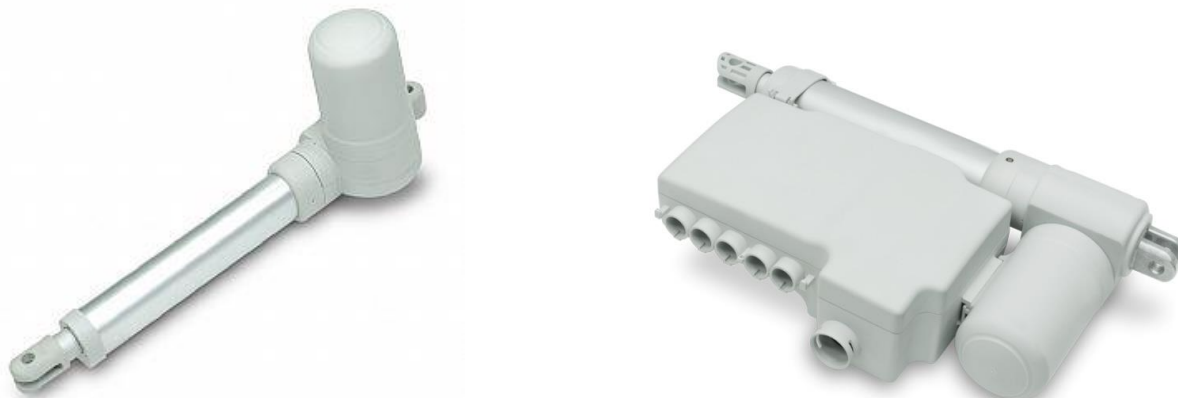


Linear actuator V66



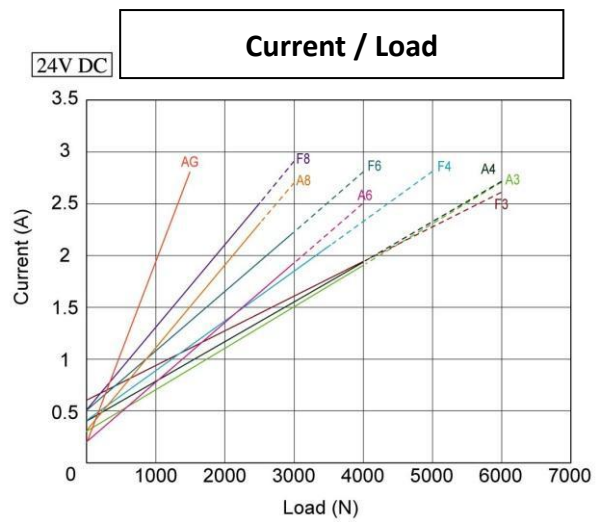
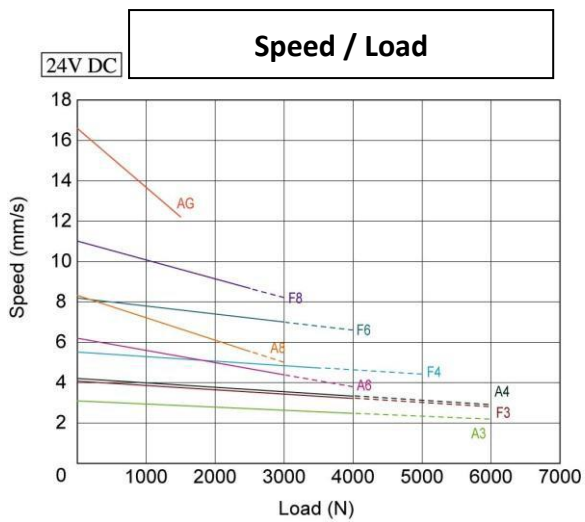
TECHNICAL SPECIFICATIONS

Motor type	24 Volts DC or 12 Volts DC
Maximum strength	6000 N in push / 4000 N in pull
Strokes	standard or tailor-made
Speed	standard : 4 mm / sec. under 6000 N
Protection grade	IP54
Operating temperatures	+5° to +40°
Duty cycle	10% (2 mn operation / 18 mn rest)
Compatibility	control boxes CB20 / CBP / NOVOMAT
Colour	RAL 7035 (light grey)

Options :

Protection grade	IP65
Mechanical safety	-Push Only -safety nut
Fixing type	various models with or without clevis (Metal / Plastic)
Direction of fixing clevis	0° / 30° / 60° or 90°
Synchronisation / Memory function	with hall effect sensors

PERFORMANCES



STANDARD DIMENSIONS

Stroke	50mm	100mm	150mm	200mm	250mm	300mm
Retracted length	228mm	278mm	338mm	388mm	448mm	498mm
Extended length	278mm	378mm	488mm	588mm	698mm	798mm

