

Linear actuator V71A



TECHNICAL SPECIFICATIONS

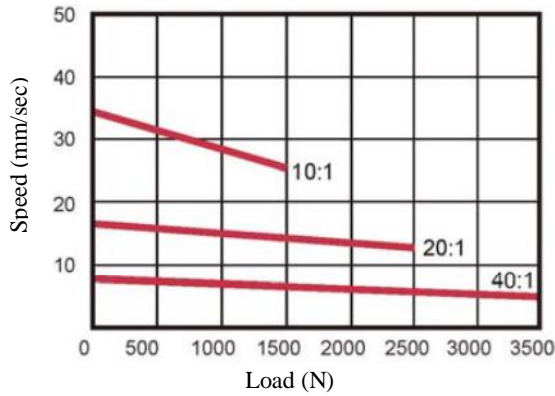
Motor type	24 V DC or 12 V DC
Drive screw	ACME threaded spindle
Push capability	3 500 N maxi
Pull capability	3 500 N maxi
Static load capability	4 500 N maxi
Gear ratio	10:1 / 20:1 / 40:1
Current consumption at load	maximum 17.6A @ 12 VDC
Speed at load	maximum 26.7 mm/sec.
Stroke	standard or customized
Electrical stroke end	adjustable limit switches
Compatibility	control boxes CI10 / CIS1 / CIS2 / CIS3
Sealing protection	IP54
Duty cycle	25% (4 mn operation / 12 mn rest)
Colour	Black

Options :

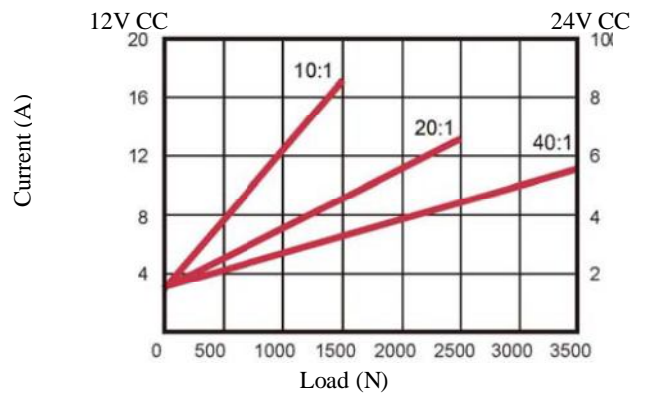
Sealing protection	IP65
Output power cord	side position

PERFORMANCES

Speed / Load

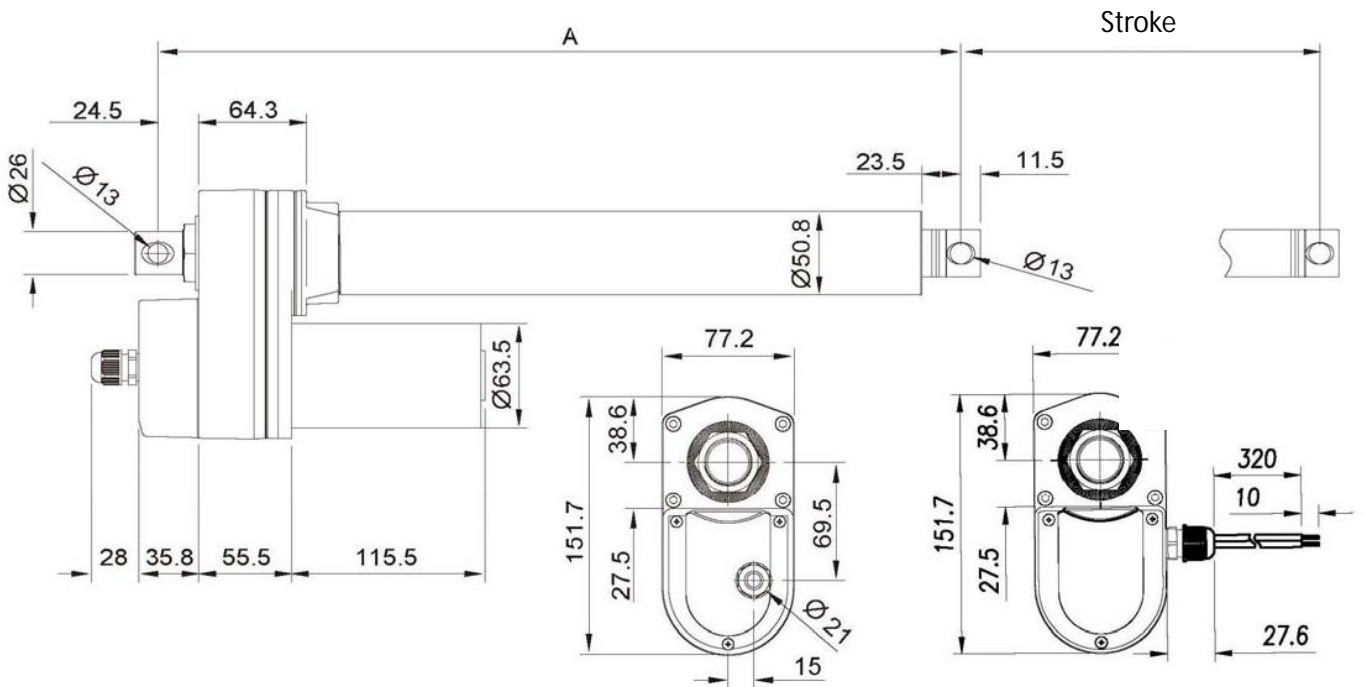
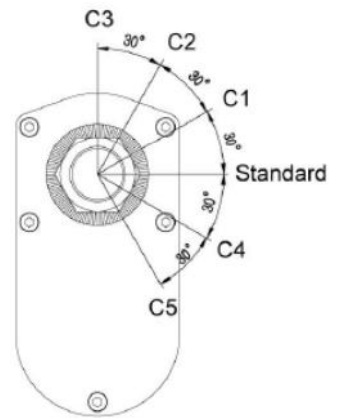


Current / Load



DIMENSIONS

Stroke (mm)	102	153	203	254	305	457	610
Retracted length A (mm)	319	370	420	471	573	725	878
Extended length (mm)	421	523	623	725	878	1182	1488



Unit = mm

Cable bottom side

Cable lateral side