

Linear actuator V72A



TECHNICAL SPECIFICATIONS

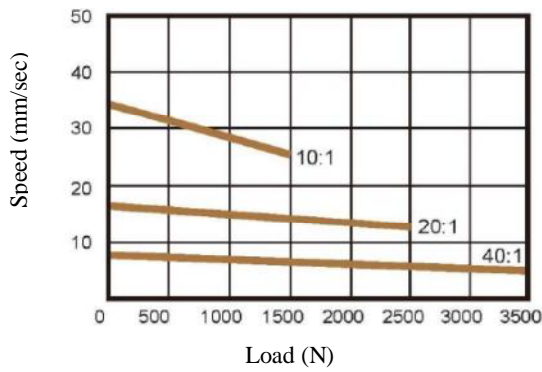
Motor type	24 V DC or 12 V DC
Drive screw	ACME threaded spindle
Push capability	3 500 N maxi
Pull capability	3 500 N maxi
Static load capability	4 500 N maxi
Gear ratio	10:1 / 20:1 / 40:1
Current consumption at load	maximum 17.6A @ 12 VCC
Speed at load	maximum 26.7 mm/sec.
Stroke	standard or customized
Compatibility	control boxes CI10 / CIS1 / CIS2 / CIS3
Sealing protection	IP66
Operation ambient temperature	-25° C to +65° C
Duty cycle	25% (2 mn operation / 6 mn rest)
Colour	Black

Options :

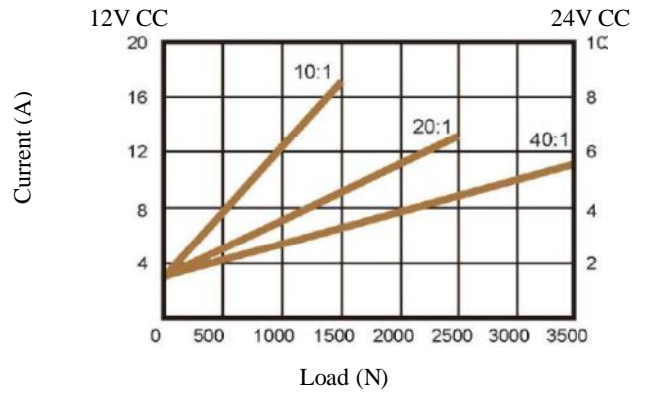
Electrical stroke end	internal limit switches adjustable by CAM
Positioning setting	-potentiometer -external REED sensors adjustable (types NC or NO)
Sealing protection	IP69K

PERFORMANCES

Speed / Load



Current / Load

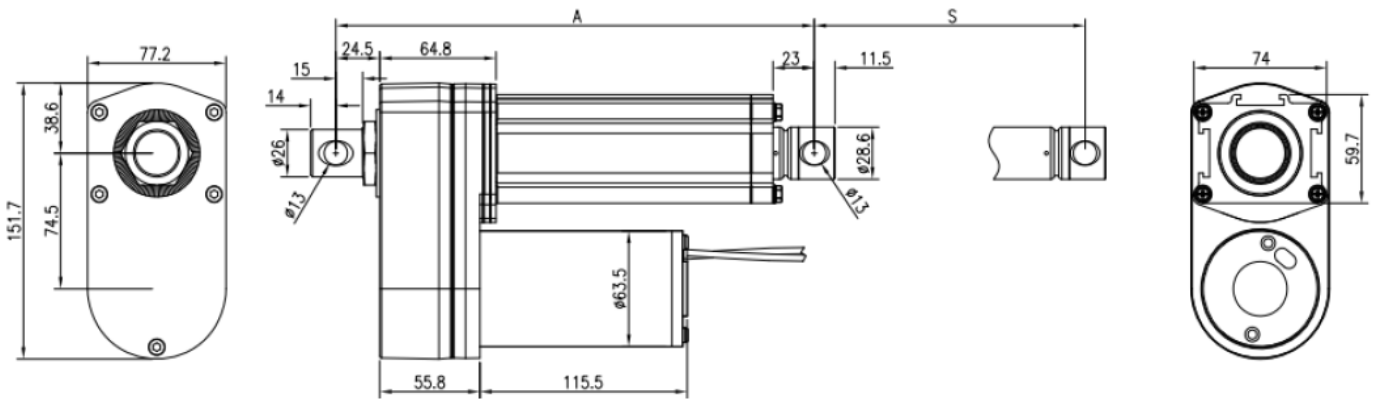


DIMENSIONS

Standard version (unit = mm):

S = stroke
A = retracted length

100	150	200	300	450	600
266	316	366	466	666	816



Version with Potentiometer (unit = mm):

Version with Limit Switches (unit = mm):

S = stroke
A = retracted length

100	150	200	300	450	600	100	150	200	300	450	600
306	356	406	506	706	856	362	412	462	612	762	912

