



TECHNICAL SPECIFICATIONS

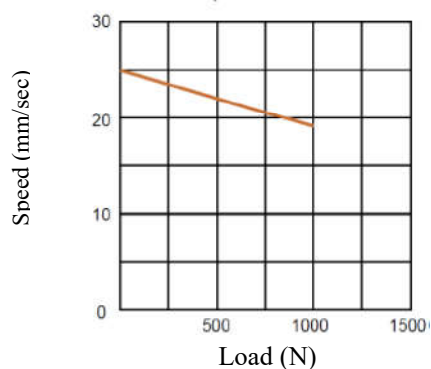
Motor type	24 Volts DC
Push capability	1 000 N maxi
Pull capability	1 000 N maxi
Speed	maximum 25mm / sec unloaded
Current consumption	maximum 5A @ 24 VCC
Strokes	standard or customized
Electrical stroke end	by preset limit switches
Material extension tube/front clevis	Stainless
Sealing protection	IP66
Duty cycle	10% (2 mn operation / 20 mn rest)
Colour	Black

Options :

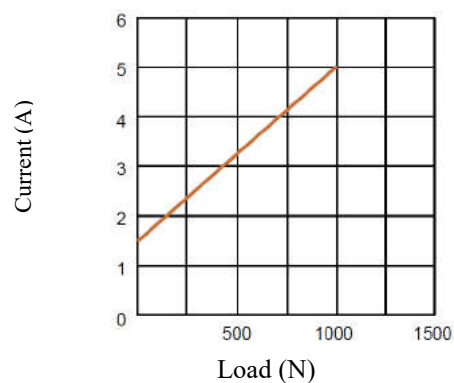
Positioning setting	by potentiometer
---------------------	------------------

PERFORMANCES

Speed / Load

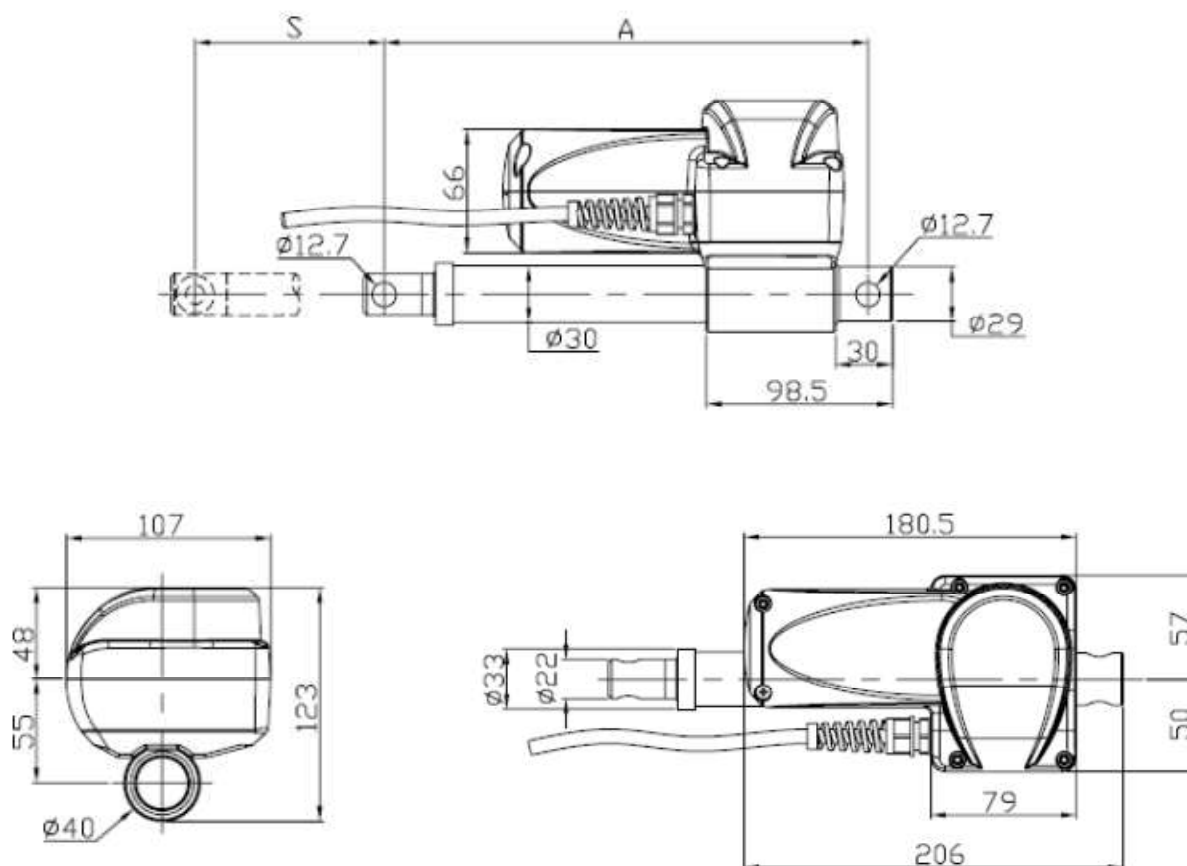


Current / Load



DIMENSIONS

Stroke (mm)	100	150	200	250	300	350	400	450	500	550	600
Retracted length (mm)	241	291	341	391	441	510	560	610	660	710	760
Extended length (mm)	341	441	541	641	741	860	960	1060	1160	1260	1360



Unit : mm