

# Linear Actuator V75A



## TECHNICAL SPECIFICATIONS

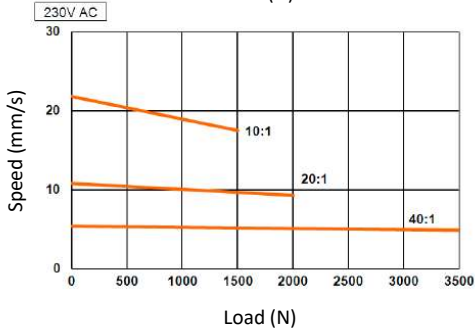
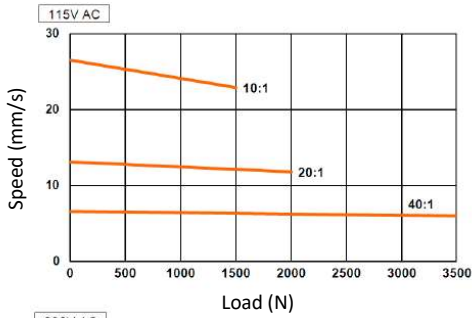
MotorType	115V @ 60Hz / 230V @ 50Hz
Transmission type	ACME
Push strength	maximum 3500 N
Pull strength	maximum 3500 N
Static Load	maximum 4500 N
Certifications	UL E362815 / RoHS EN61000-3 / EN61000-4 / EN6100-6 / EN60335-1
Stroke	102 ~ 610 mm
Speed	maximum 26.5 mm/sec no load maximum 17.5 mm/sec full load
Current	maximum 3.1A @ 115V AC
Extension tube material	Stainless steel
Duty cycle	25% ou 4mn continuous operation in 12mn
Ambient temperature	-26°C ~ +65°C
Protection grade	IP54
Color	Black

### Options :

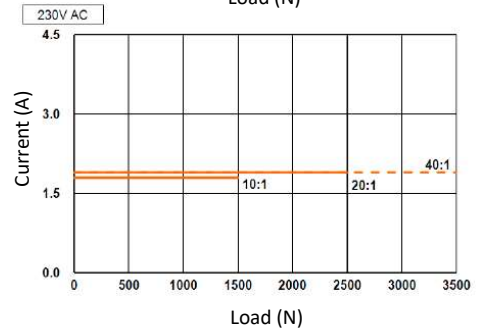
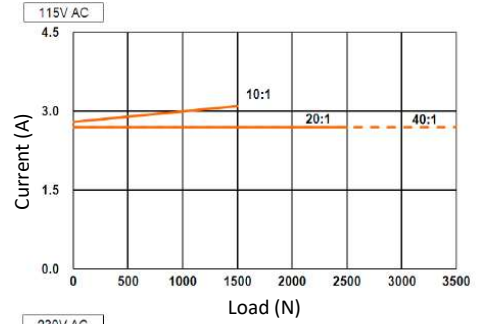
Protection grade	IP65
Limit switches	adjustable
Analog positioning feedback	potentiometer

## PERFORMANCES

### Speed / Load



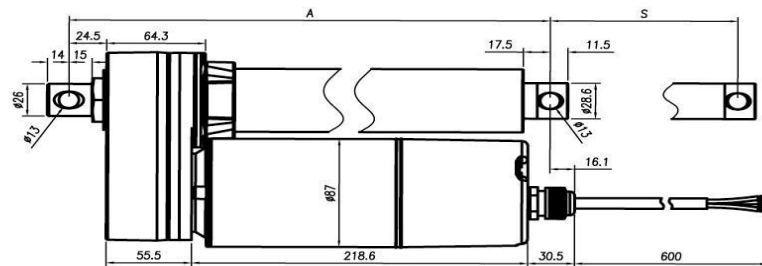
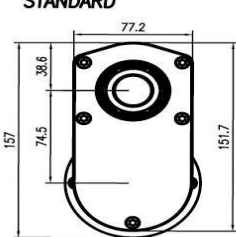
### Current / Load



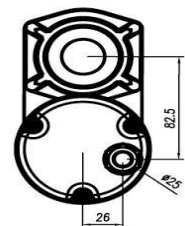
Dyn. Load Maxi (N)	Speed (mm/s)				Current (A)			
	115V		230V		115V		230V	
	No Load	Full Load	No Load	Full Load	No Load	Full Load	No Load	Full Load
1500	26.5	22.9	21.8	17.5	2.8	3.1	1.8	1.8
2500	13.1	11.8	10.8	9.3	2.7	2.7	1.9	1.9
3500	6.6	6.0	5.4	4.9	2.7	2.7	1.9	1.9

## DIMENSIONS

ACME  
STANDARD

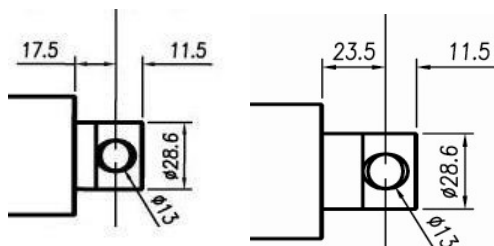


Unit : mm



Model	4''	6''	8''	10''	12''	18''	24''
STOKE S (± 2.5mm)	102	153	203	254	305	457	610
Retracted Length A (± 3.8mm)	262	313	364	414	465	668	821

Front Connector



Rear Connector

