

Linear Actuator V75B



SPECIFICATIONS TECHNIQUES

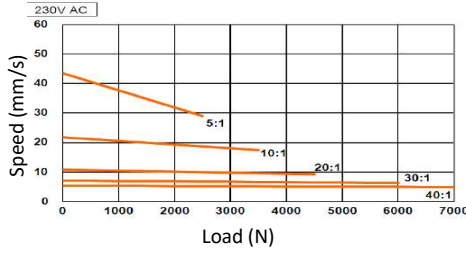
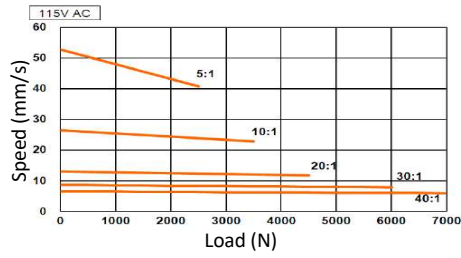
MotorType	115V @ 60Hz / 230V @ 50Hz
Transmission type	Ball screw
Push strength	maximum 7000 N
Pull strength	maximum 7000 N
Static Laod	maximum 13600 N
Certifications	UL E362815 / RoHS EN61000-3 / EN61000-4 / EN6100-6 / EN60335-1
Stroke	102 ~ 610 mm
Speed	maximum 52.8 mm/sec no load maximum 40.8 mm/sec full load
Current	maximum 3.5A @ 115V AC
Extension tube material	Stainless steel
Duty cycle	25% ou 4mn continuous operation in 12mn
Ambient temperature	-26°C ~ +65°C
Protection grade	IP54
Color	Black

Options :

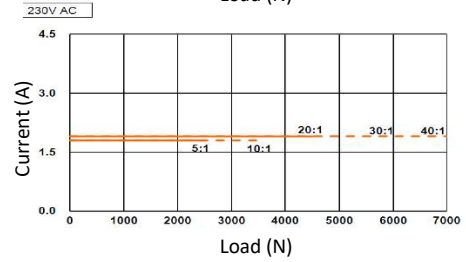
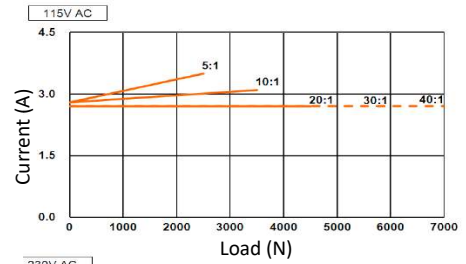
Protection grade	IP65
Limit switches	ajustable
Anaolg positioning feedback	potentiometer

PERFORMANCES

Speed / Load



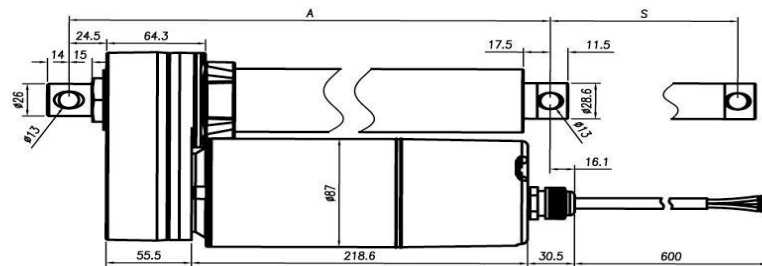
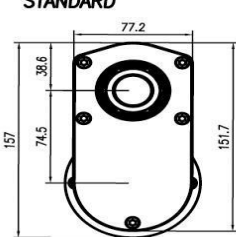
Current / Load



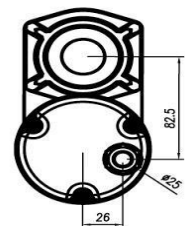
Dyn. Load Maxi (N)	Speed (mm/s)				Current (A)			
	115V		230V		115V		230V	
	No Load	Full Load	No Load	Full Load	No Load	Full Load	No Load	Full Load
2500	52.8	40.8	43.5	29.0	2.8	3.5	1.8	1.8
3500	26.5	22.9	21.8	17.5	2.8	3.1	1.8	1.8
4500	13.1	11.8	10.8	9.3	2.7	2.7	1.9	1.9
6000	8.7	7.9	7.2	6.3	2.7	2.7	1.9	1.9
7000	6.6	6.0	5.4	4.9	2.7	2.7	1.9	1.9

DIMENSIONS

ACME
STANDARD

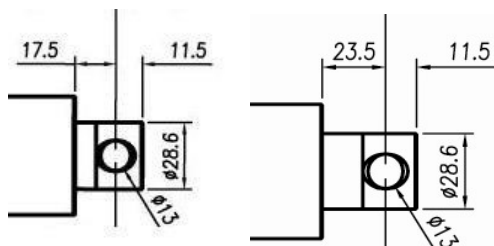


Unit : mm



Modèle	4"	6"	8"	10"	12"	18"	24"
COTE S (± 2.5mm)	102	153	203	254	305	457	610
COTE A (± 3.8mm)	302	353	404	455	506	735	888

Front Connector



Rear Connector

