

Linear actuator V72A (ACME)



TECHNICAL SPECIFICATIONS

Main application	industrial
Input voltage	12 VDC or 24 VDC or 48 VDC
Protection grade	IP66, IP69K
Max. Rated load	3500 N
Max. Static load	4500 N
Max. speed	36.5 mm/sec @ no load
Over-load protection	by clutch
Extension tube material	Stainless steel
Outer tube material	aluminium
Stroke	100 ~ 600 mm
Power cord	Length = 250 mm with tinned wires
Control box compatibility	BCI / BCI1 / BCI2 / BCI3
Duty cycle	25 % max 2 min. Continuous operation in 8 min.
Operating temperatures	-25° C to +65° C
Colour	Black gearbox and motor
Certified	CE marking, EMC Directive 2014/30/EU

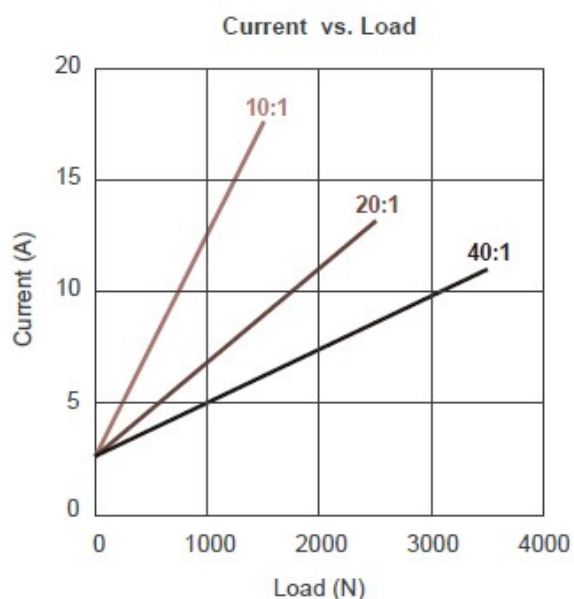
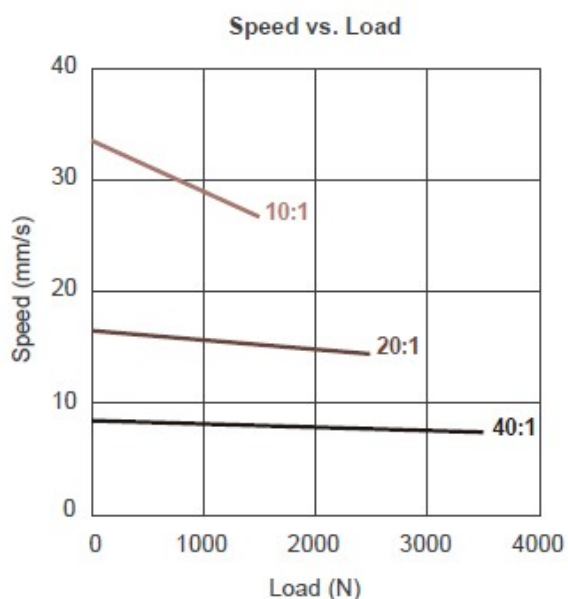
Options :

Preset limit switches	to stop motor automatically at both ends by cutting power
Positioning signal feedback	1 x Hall Effect sensor
Analog and absolute positioning feedback	by potentiometer
External adjustable reed sensor	NC-type per default (NO-type also available)

PERFORMANCES

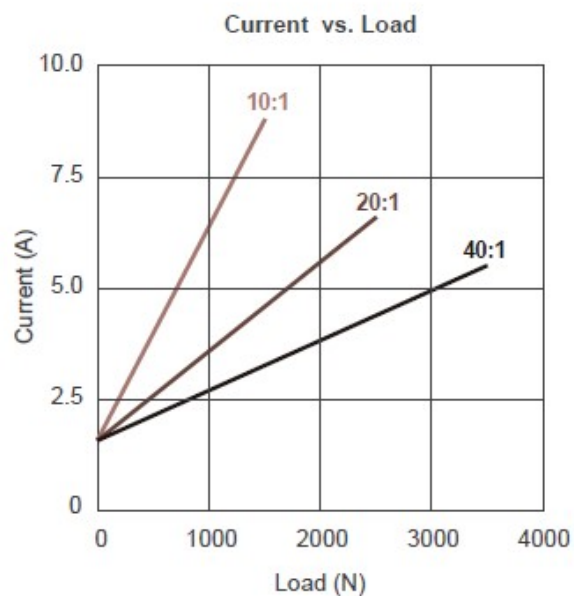
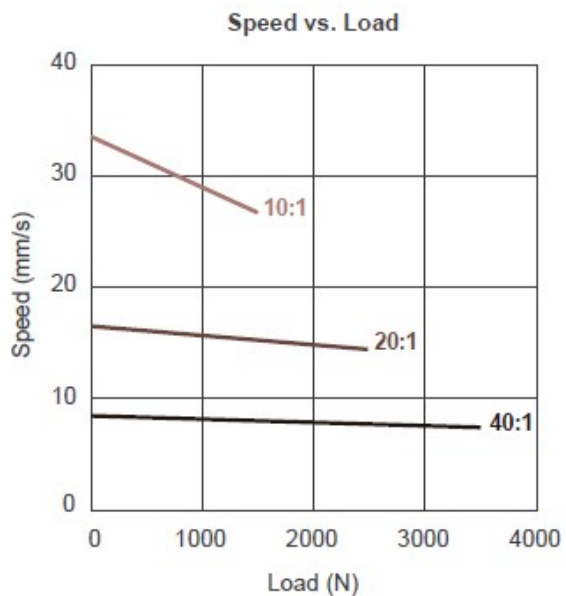
• 12V DC motor

Gear ratio	Push/Pull Max. (N)	Typical Speed (mm/s)		Typical Current (A)	
		No load	Full load	No load	Full load
10:1	1500	33.5	26.7	2.6	17.6
20:1	2500	16.8	14.3	2.6	13.2
40:1	3500	8.4	7.4	2.6	11.0



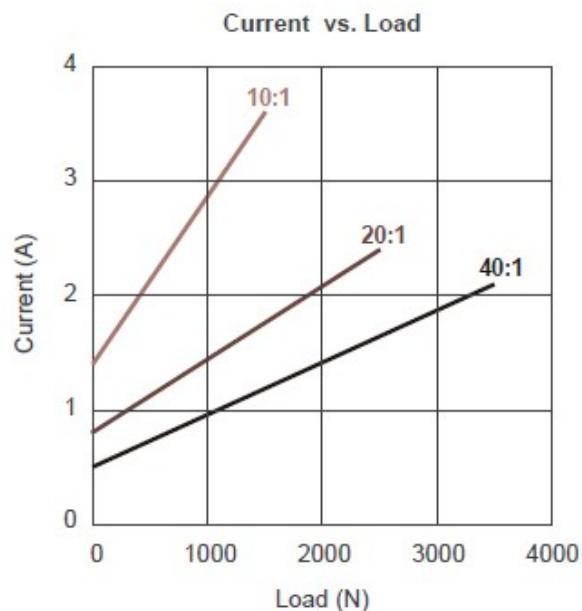
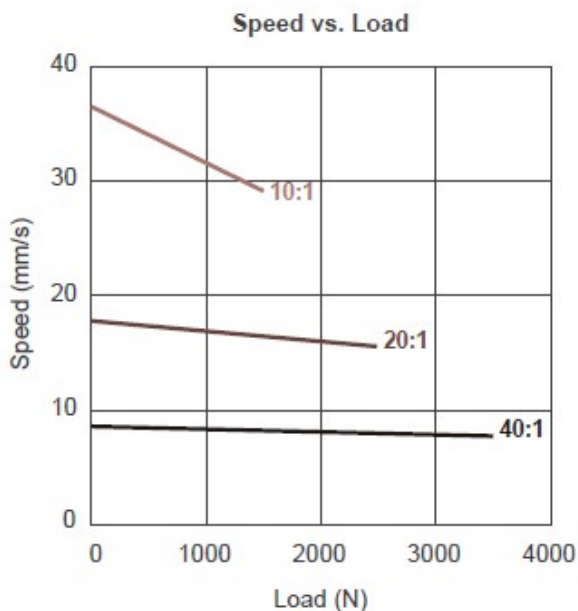
• 24V DC motor

Gear ratio	Push/Pull Max. (N)	Typical Speed (mm/s)		Typical Current (A)	
		No load	Full load	No load	Full load
10:1	1500	33.5	26.7	1.6	8.8
20:1	2500	16.8	14.3	1.6	6.6
40:1	3500	8.4	7.4	1.6	5.5



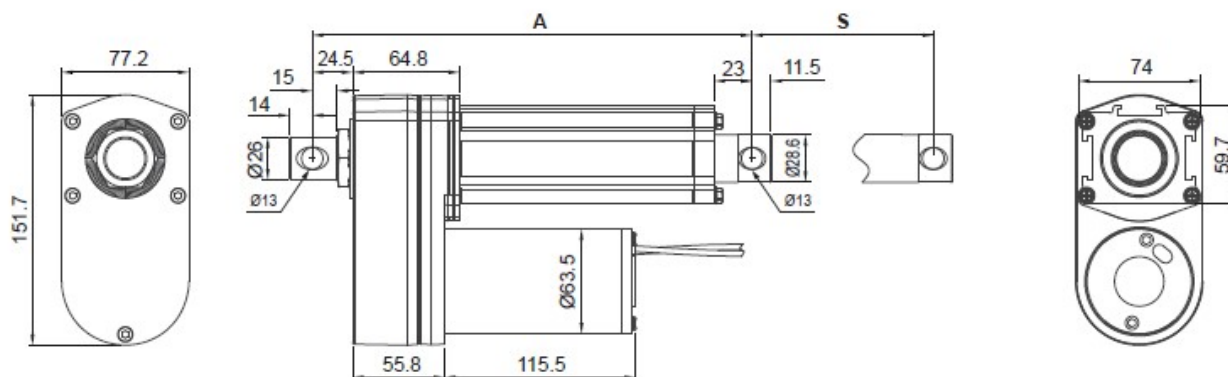
● 48V DC motor

Gear ratio	Push/Pull Max. (N)	Typical Speed (mm/s)		Typical Current (A)	
		No load	Full load	No load	Full load
10:1	1500	36.5	29.1	1.4	3.6
20:1	2500	17.8	15.3	0.8	2.4
40:1	3500	8.6	7.8	0.5	2.1

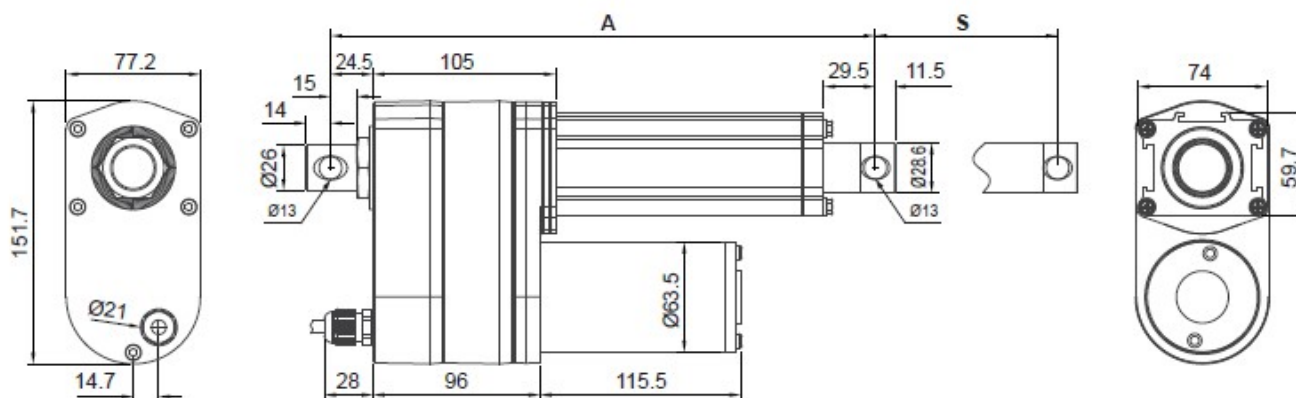


DIMENSIONS

● Standard (without Limit switch nor Potentiometer)



● With Limit switches (LT) or Potentiometer (POT)



• Installation Dimension

Retracted length (A)

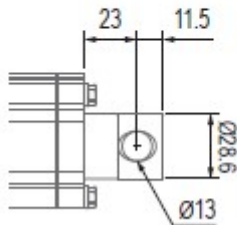
Option	Stroke (S)					
	100 (4")	150 (6")	200 (8")	300 (12")	450 (18")	600 (24")
Standard	266	316	366	466	666	816
POT	306	356	406	506	706	856
LT	362	412	462	612	762	912

(tolerance: ±5mm)

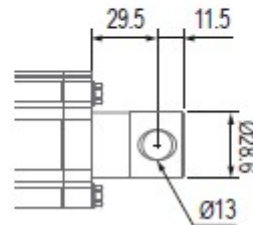
N.B. : other customized retracted lengths and strokes available upon request.

• Front connector

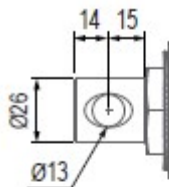
- Standard (without Limit switch nor Potentiometer)



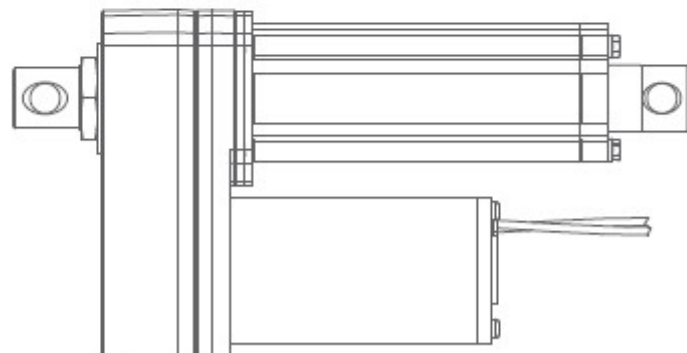
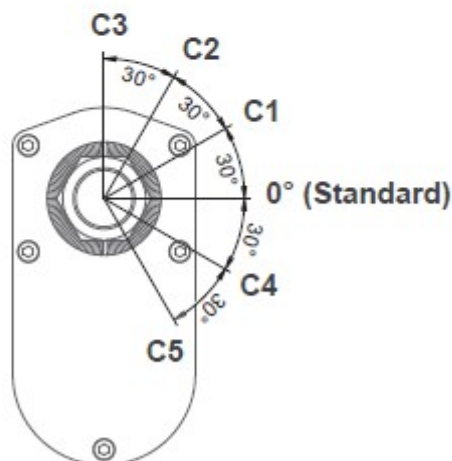
- With Limit switches (LT) or Potentiometer (POT)



• Rear connector



• Pivot orientation of rear connector



Note: As an example in 0° orientation.