



## TECHNICAL SPECIFICATIONS

Motor type	24 Volts DC (type D)
Force capability	-Push = maxi 4 000 N -Pull = maxi 2 000 N
Stroke	standard 50 to 400 mm and customized upon demand
Speed	-maximum 30.3 mm / sec. without load -maximum 4.0 mm/ sec. at full load (4 000 N)
Preset limit switches	to stop actuator at the end of stroke by power cut-off
Type of cable	straight L = 300 mm
Protection grade	IP42
Control box compatibility	-BCT / BCS1 / BCS2 / BC3T / BC4M -without control box : TES1 / TES2 (with cables DL1 / TL1)
Operation temperatures	-20° to +65°
Duty cycle	10% (2 mn operation / 18 mn rest)
Colour	Black
Certification	CE marking / EMC directive 2014/30/EU

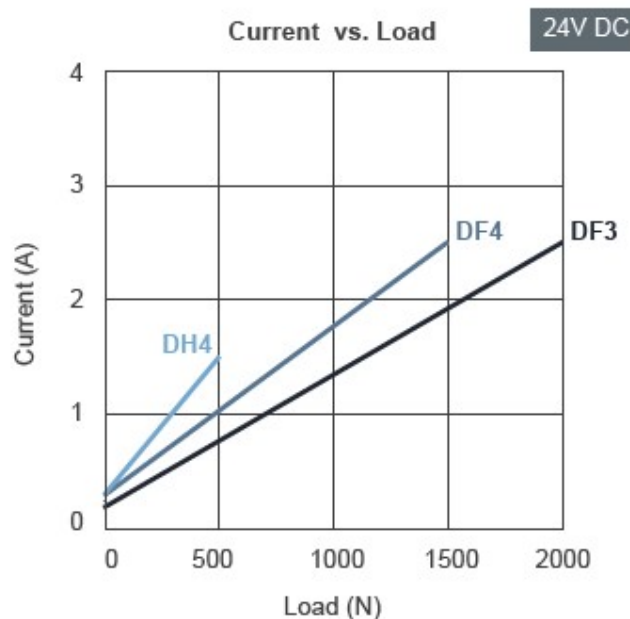
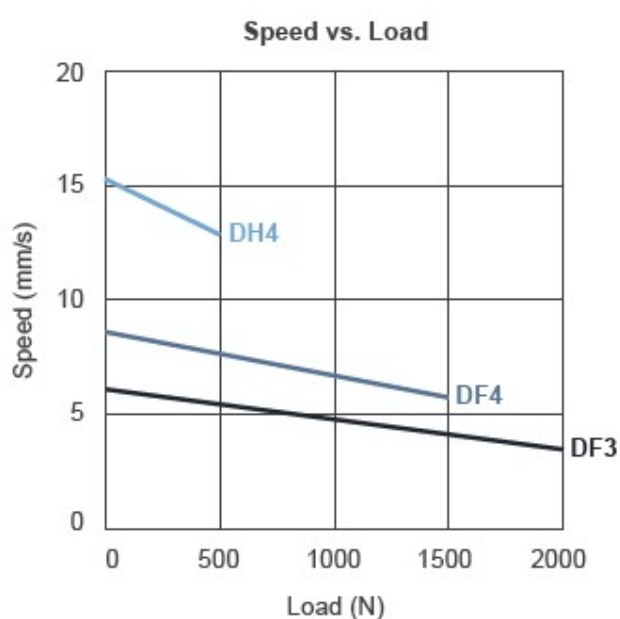
### Options :

Type of cable	-straight L = 1 000 mm -coil L = 450 mm with 300 mm spiral -special cables DL1 / TL1 (without control box)
Enhanced motor	motor type E
Positioning signal feedback	with dual-Hall effect sensors
Mechanical safety	Push Only
Thermal protection	with PTC thermistor

## PERFORMANCES

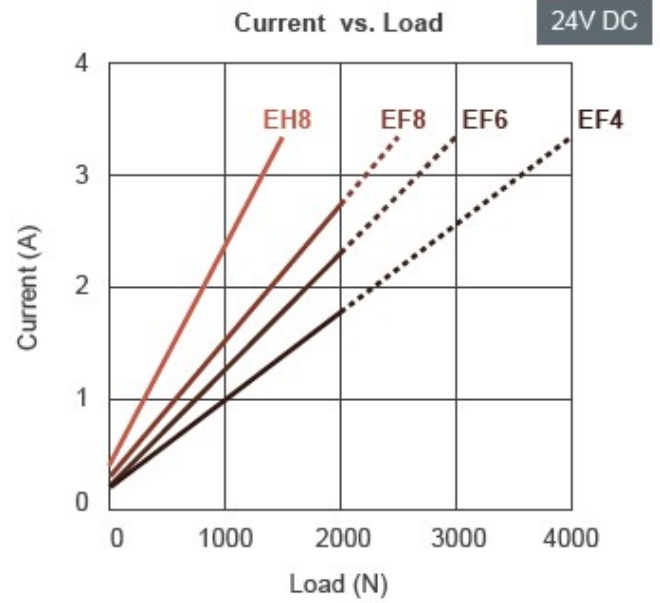
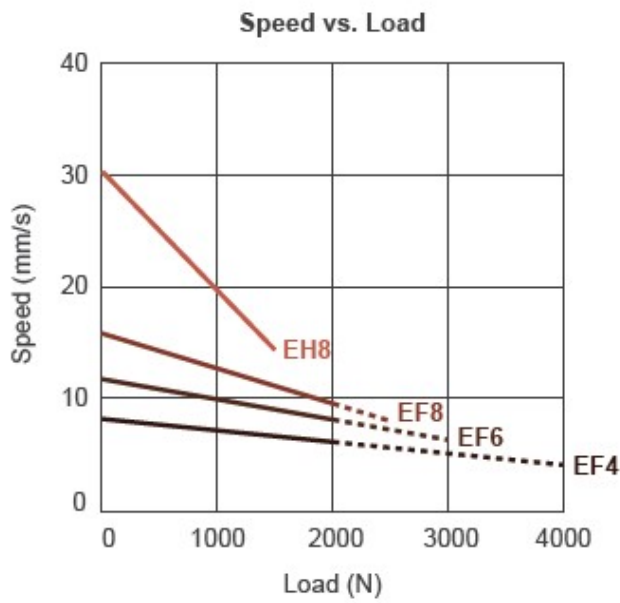
### • With default motor

Version	Maxi Push capability (N)	Maxi Pull capability (N)	Speed (mm/sec)		Current consumption (A)	
			Without load	At full load	Without load	At full load
V40-DF3	2 000	2 000	6.1	3.5	0.2	2.5
V40-DF4	1 500	1 500	7.7	5.8	0.3	2.5
V40-DH4	500	500	15.2	12.9	0.3	1.5



### • With enhanced motor

Version	Maxi Push capability (N)	Maxi Pull capability (N)	Speed (mm/sec)		Current consumption (A)	
			Without load	At full load	Without load	At full load
V40-EF4	4 000	2 000	8.4	4.0	0.2	3.3
V40-EF6	3 000	2 000	11.9	6.3	0.2	3.3
V40-EF8	2 500	2 000	15.9	8.1	0.3	3.3
V40-EH8	1 500	1 500	30.3	14.3	0.4	3.3



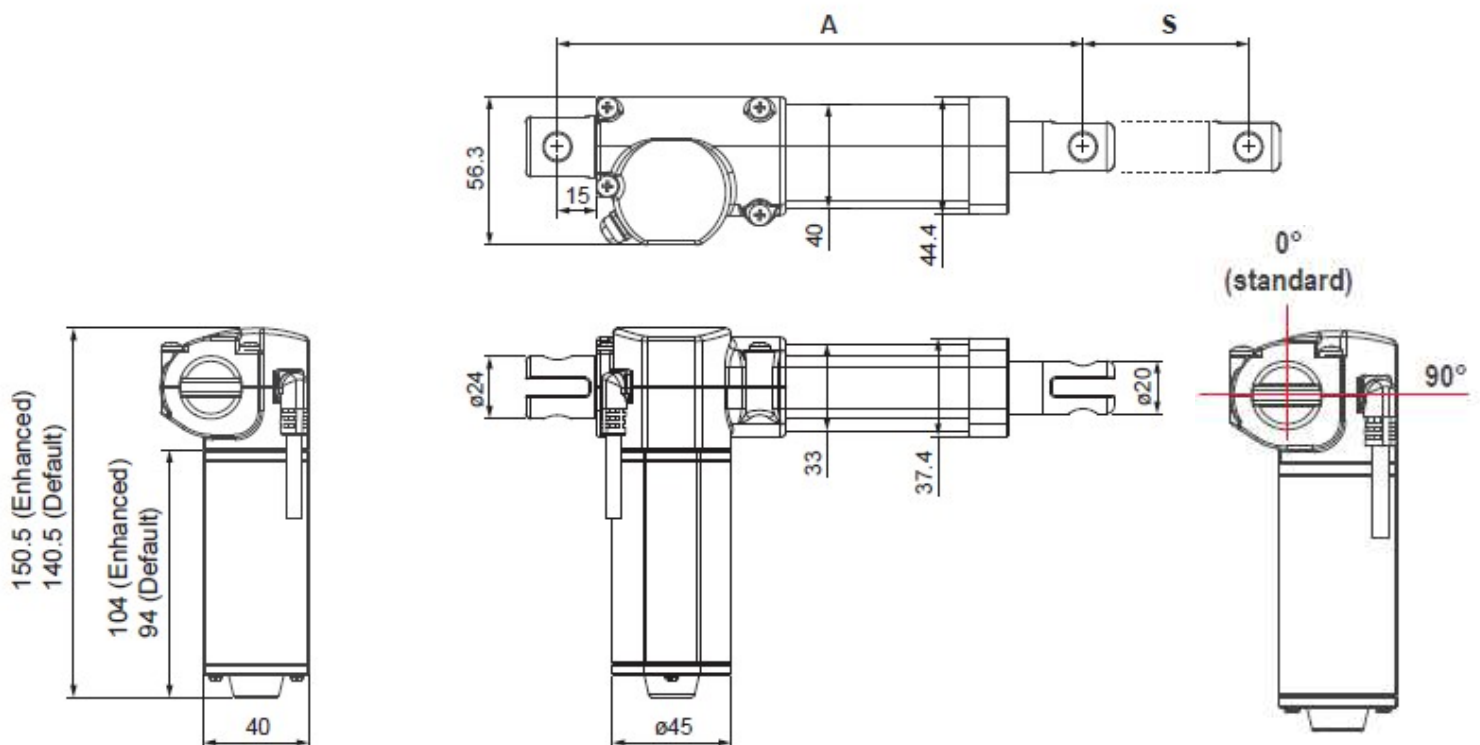
Push / Pull Load — Push Load - - - -

**Remarks:**

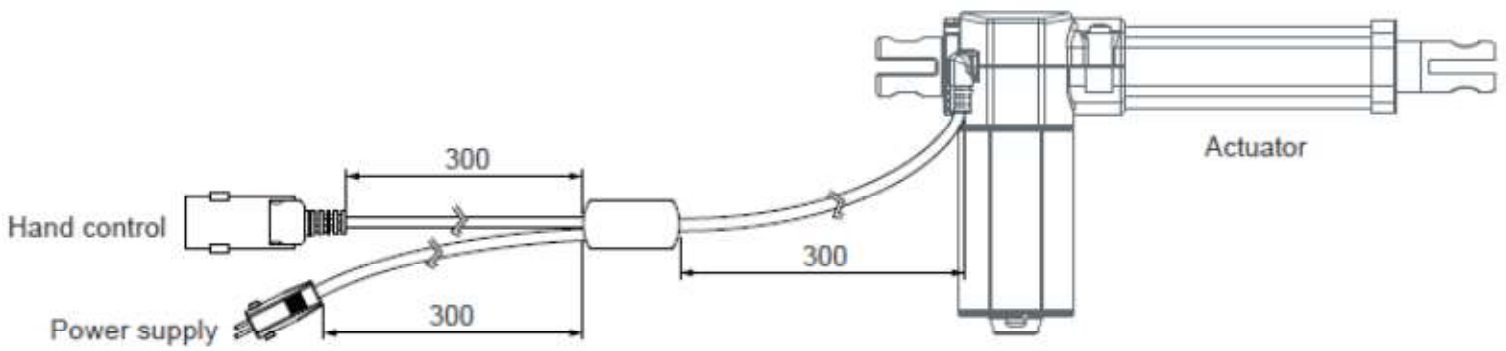
- \* The typical speed or typical current means the average value neither upper limit nor lower limit. The performance curves are made with typical values.

## DIMENSIONS

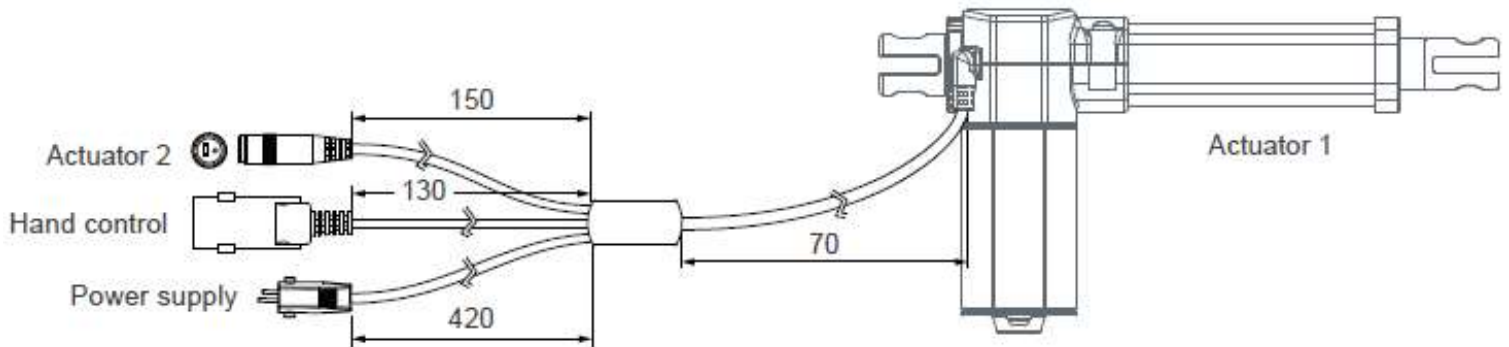
● **standard version**



● version with cable DL1



● version with cable TL1



● Installation dimension

● Retracted length (A)

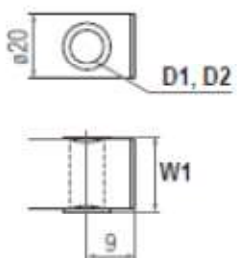
Front connector code	Stroke (S)			
	≤200mm	201~250mm	251~300mm	301~400mm
2	$A \geq S+110\text{mm} (\pm 3\text{mm})$	$A \geq S+120\text{mm} (\pm 3\text{mm})$	$A \geq S+130\text{mm} (\pm 3\text{mm})$	$A \geq S+140\text{mm} (\pm 3\text{mm})$
3, 6	$A \geq S+123\text{mm} (\pm 3\text{mm})$	$A \geq S+133\text{mm} (\pm 3\text{mm})$	$A \geq S+143\text{mm} (\pm 3\text{mm})$	$A \geq S+153\text{mm} (\pm 3\text{mm})$

Available stroke (S) range = 50 ~ 400mm

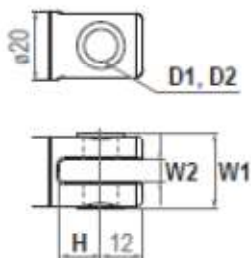
Extended length (B) = S + A

● Front connector

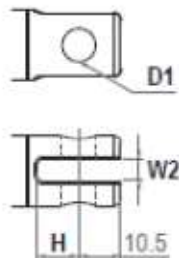
**2: Drilled hole**  
(only for models with max. load ≤2000N)



**3: Metal slot**

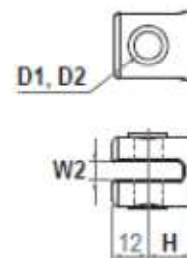


**6: Plastic slot**  
(only for models with max. load ≤2000N)



● Rear connector

**2: Metal**



**4: Plastic**  
(only for models with max. load ≤2000N)

