

Linear actuator V10



TECHNICAL SPECIFICATIONS

Input Voltage	24 Volts DC
Maximum force	-Push = 1 000 N -Pull = 1000 N
Strokes	-standard 50 ~ 300mm or customized -preset limit switches
Noise level	≤48 ~ ≤52dB depending on versions
Speed	-maximum 36 mm/sec. without load -maximum 11 mm/sec. at full load
Compatibility with control box	-BCT/BCS1/BCS2/BCT2/BC3T/BC4M/BC2P/BC4P/BC6C/BC7C without Hall effect sensors -BC3T-SY/BC4M-S/BC4M-B/BC4M-SY with Hall effect sensors
Duty cycle	10% (2 mn continuous operation in 20min)
Ambient operation temperature	-20°C ~ +65°C
IP protection level	IPX5
Color	Aluminium grey
Standards certification	CE Marking, MDD Directive 93/42/EEC

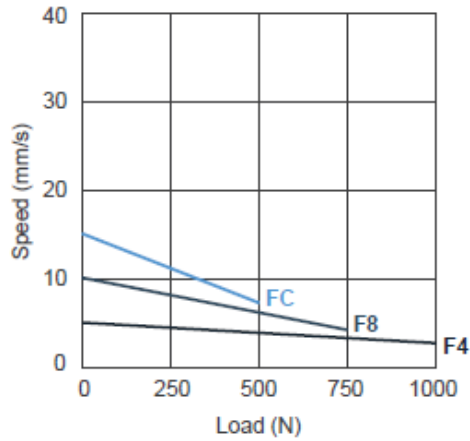
Options :

Positioning signal feedback	2x Hall effect sensors
Safety in Pull direction	Mechanical push only extension tube
Thermal protection	By PTC thermistor

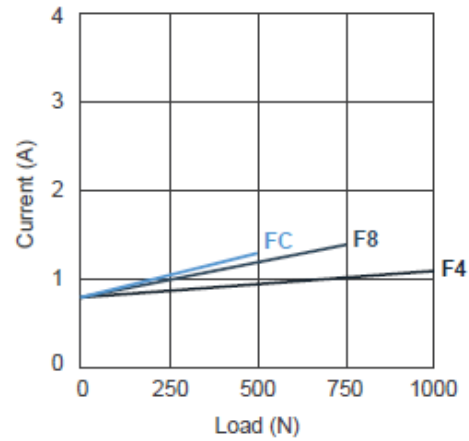
PERFORMANCES

Model No.	Push/Pull Max. (N)	Typical Speed (mm/s)		Typical Current (A) @24V		Noise level (dB)
		No load	Full load	No load	Full load	
V10-24F4-XX...	1000	5.1	2.8	0.8	1.1	≤ 48
V10-24F8-XX...	750	10.1	4.3	0.8	1.4	≤ 48
V10-24FC-XX...	500	15.1	7.4	0.8	1.3	≤ 48
V10-24R4-XX...	1000	7.2	4.5	1.0	1.8	≤ 50
V10-24R8-XX...	750	14.2	8.4	1.0	2.1	≤ 50
V10-24RC-XX...	500	21.6	13.9	1.0	1.8	≤ 50
V10-24L8-XX...	500	18.6	14.8	1.2	2.0	≤ 52
V10-24LC-XX...	400	27.5	20	1.2	2.1	≤ 52
V10-24LG-XX...	250	36	29.3	1.2	1.9	≤ 52

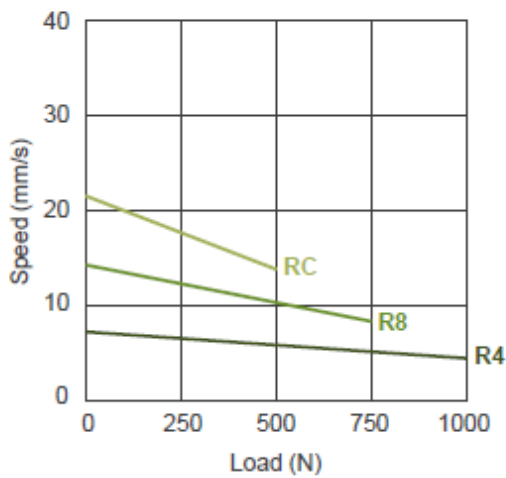
Speed vs. Load



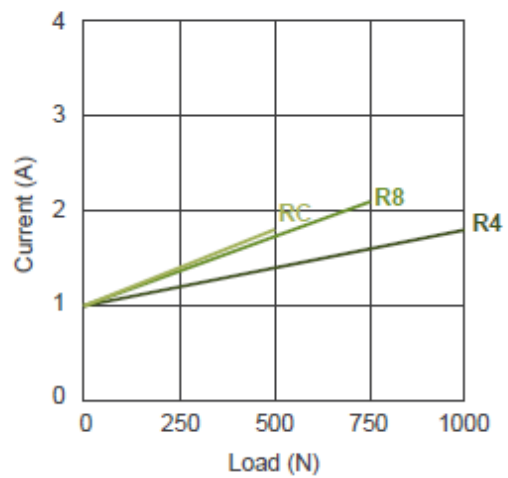
Current vs. Load



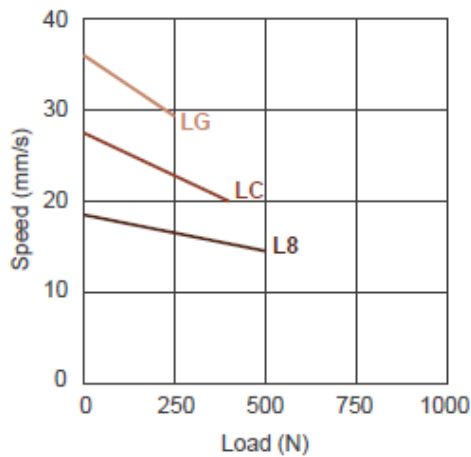
Speed vs. Load



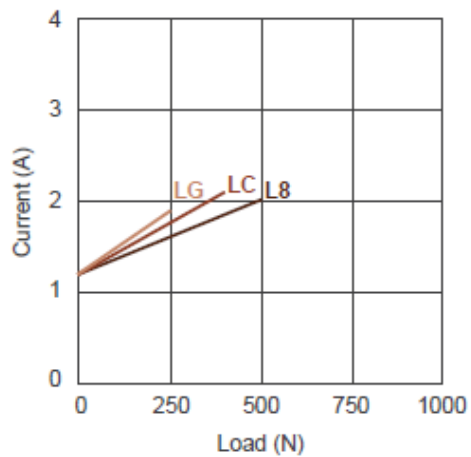
Current vs. Load

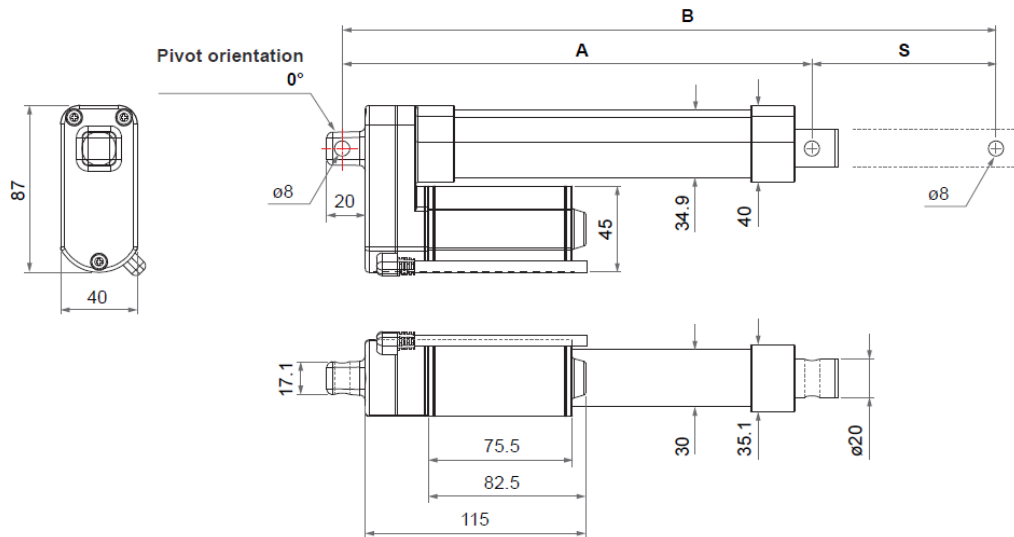


Speed vs. Load



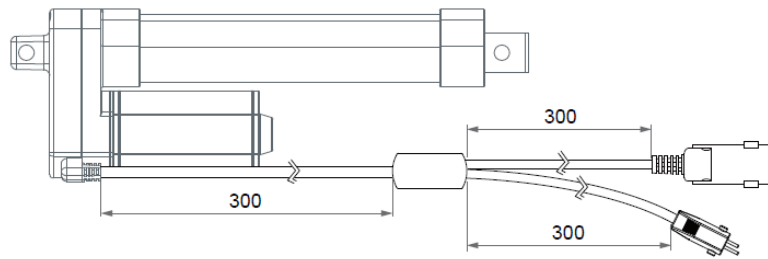
Current vs. Load





Note: As an example in 0° orientation for rear connector.

Dedicated cable DL1



Installation Dimension

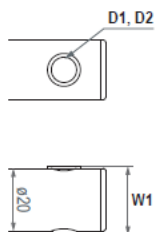
• Retracted length (A)

Front connector code	Stroke (S)		
	≤ 200mm	201~250mm	251~300mm
2, 4	$A \geq S+120\text{mm} (\pm 3\text{mm})$	$A \geq S+130\text{mm} (\pm 3\text{mm})$	$A \geq S+140\text{mm} (\pm 3\text{mm})$
3, 6	$A \geq S+135\text{mm} (\pm 3\text{mm})$	$A \geq S+145\text{mm} (\pm 3\text{mm})$	$A \geq S+155\text{mm} (\pm 3\text{mm})$

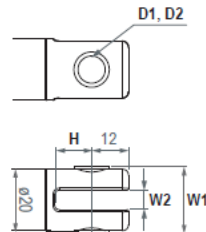
Available stroke (S) range = 50 ~ 300mm
 Extended length (B) = S + A

• Front connector

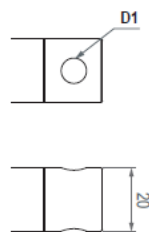
2: Drilled hole



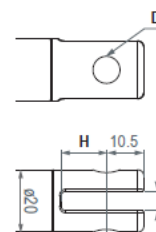
3: Metal slot



4: Plastic solid

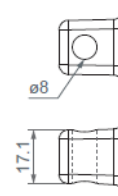


6: Plastic slot



• Rear connector

2: Metal

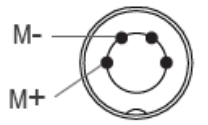


Front connector code	Diameter of pivot without bushing (D1)	Diameter of pivot with bushing (D2)	Width with bushing (W1)	Slot width (W2)	Slot depth (H)
2	ø8, ø10	ø8	22	N/A	N/A
3	ø8, ø10	ø8	22	6	13.5
4	ø8, ø10	N/A	N/A	N/A	N/A
6	ø8, ø10	N/A	N/A	6	15

CABLE PLUG

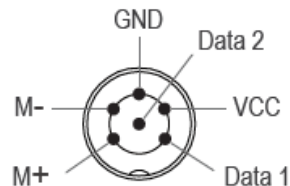
F-type, V-type or H-type DIN plug (required to be connected to the control box):

- Without positioning sensor feedback



4-pin DIN plug

- With dual Hall effect sensors

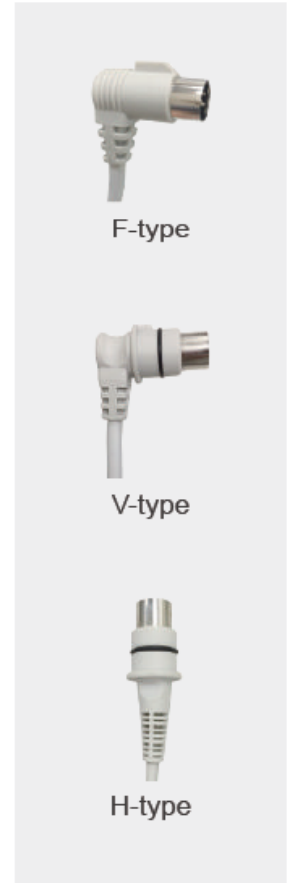


6-pin DIN plug

Note:

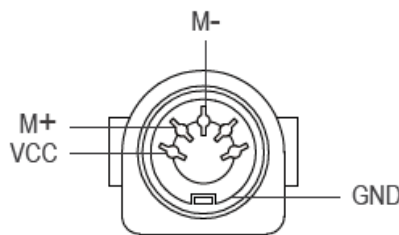
1. Connect Pin (M+) to "+" & Pin (M-) to "-" of DC power, the actuator will extend.
2. Hall effect sensor resolution:

Model No.	Resolution (pulses/mm)
V10-24F4-XXX.XXX-XXXHX0X	10
V10-24F8-XXX.XXX-XXXHX0X	5
V10-24FC-XXX.XXX-XXXHX0X	3.3
V10-24R4-XXX.XXX-XXXHX0X	10
V10-24R8-XXX.XXX-XXXHX0X	5
V10-24RC-XXX.XXX-XXXHX0X	3.3
V10-24L8-XXX.XXX-XXXHX0X	5
V10-24LC-XXX.XXX-XXXHX0X	3.3
V10-24LG-XXX.XXX-XXXHX0X	2.5

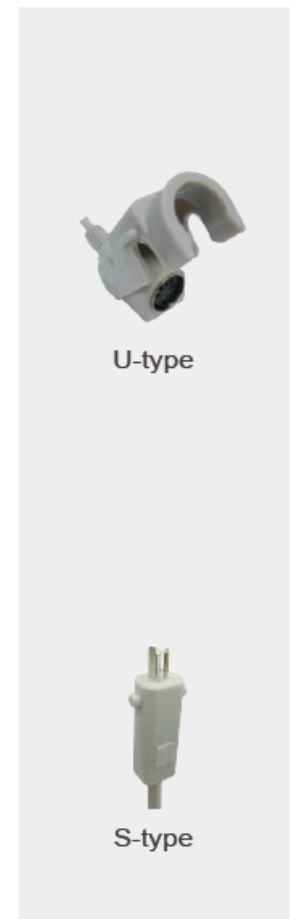


With special cable DL1 (NOT required to be connected to any control box):

- Hand control connector: U-type female connector

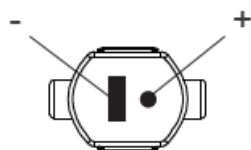


5-pin connector



Note: Connect pin (M1+) to "+" & pin (M1-) to "-" of DC power, the actuator will extend.

- Power plug: with S-type DIN 41529 male plug



DIN 41529 plug (S-type for DL1 only)