



TECHNICAL SPECIFICATIONS

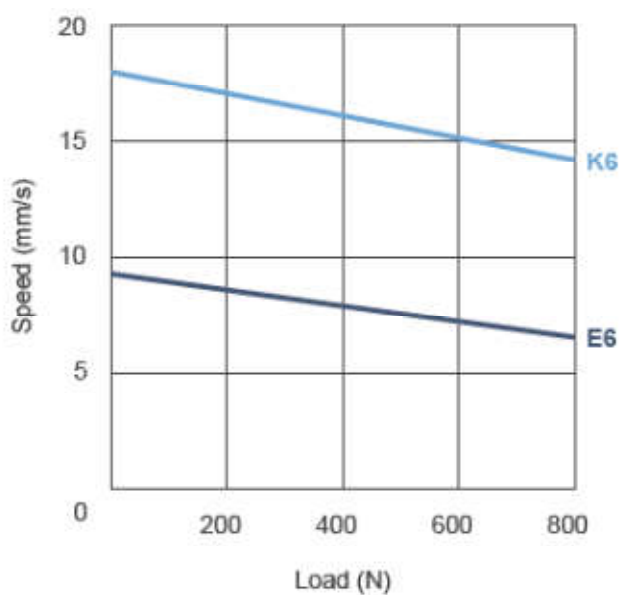
Motor type	24 Volts CC
Push capability	maximum 800 N
Pull capability	maximum 800 N
Strokes	standard and customized
Speed at full load	maximum 14.1 mm/sec. under 800 N
Consumption	maximum 1.6 A @ 24 VDC
Electrical stroke end	pre-set limit switches
Material outer / inner tubes	Aluminium
Sealing protection	IP43
Duty cycle	10% (2 mn operation / 18 mn rest))
Operation ambient temperature	-25°C to +65°C
Colour	Grey

Options :

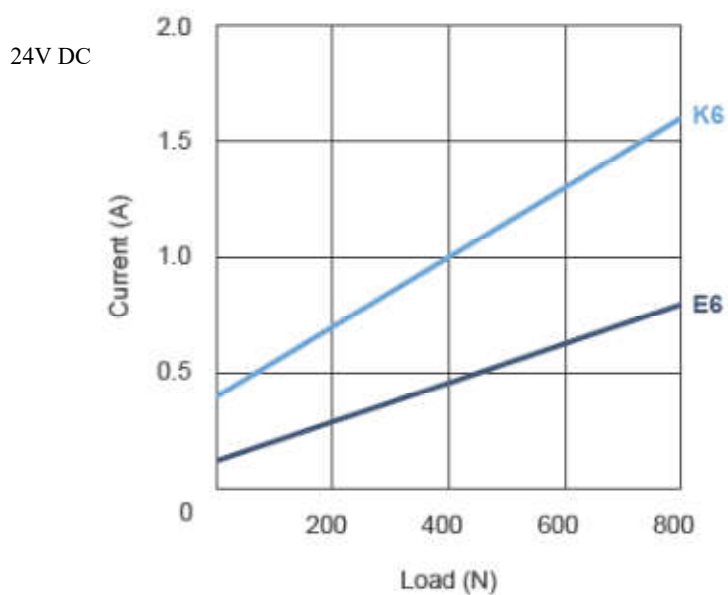
Fixing type	drilled hole / plastic slot / spherical rod eye
Rear connector	clamp
Mounting bracket	-x 1 -x 2
Sealing protection	IP54

PERFORMANCES

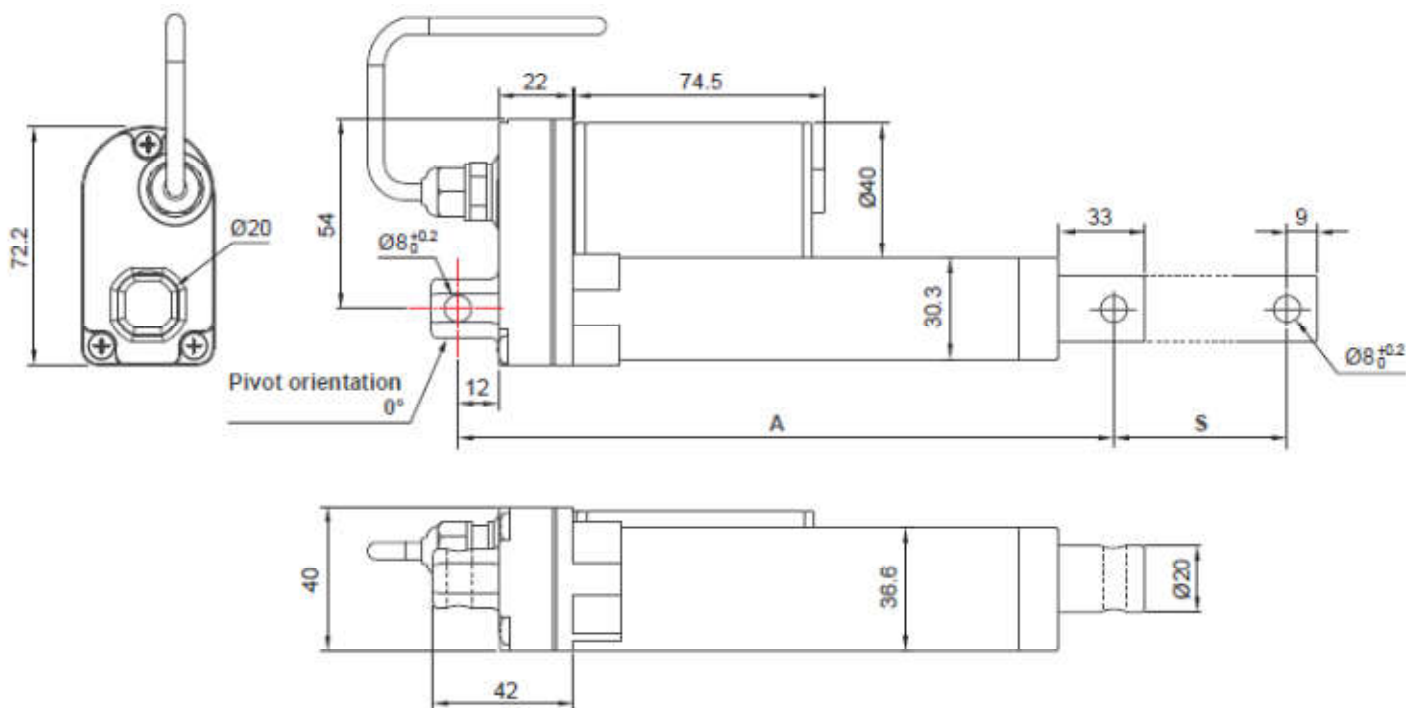
Speed / Load



Current / Load



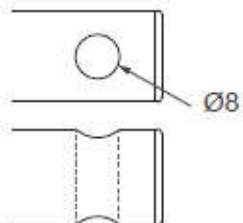
DIMENSIONS



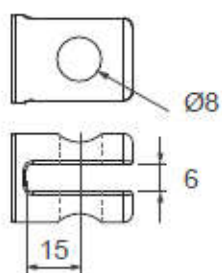
Front connector code	Retracted length (A)	Stroke (S)					
		50	100	150	200	250	300
1	$A \geq S + 109 \text{ mm } (\pm 3\text{mm})$	159	209	260	311	362	413
2	$A \geq S + 128 \text{ mm } (\pm 3\text{mm})$	178	228	278	328	378	428
3	$A \geq S + 138 \text{ mm } (\pm 3\text{mm})$	188	238	288	338	388	438

Front connector

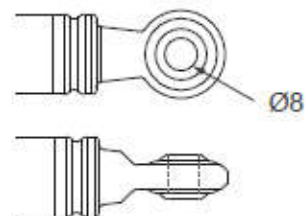
1: Drilled hole



2: Plastic slot

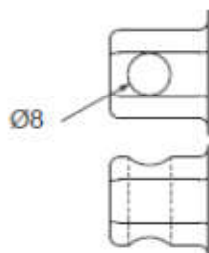


3: Spherical rod eye

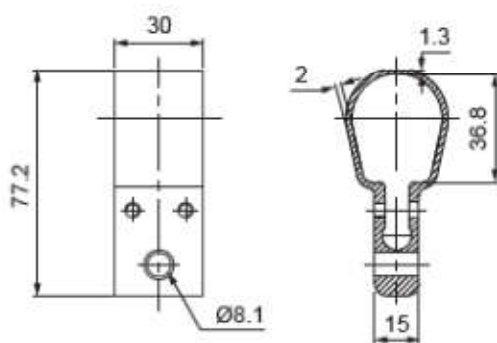


Rear connector

2: Metal



Clamp



Mounting bracket (MB22)

