

Linear actuator V45



TECHNICAL SPECIFICATIONS

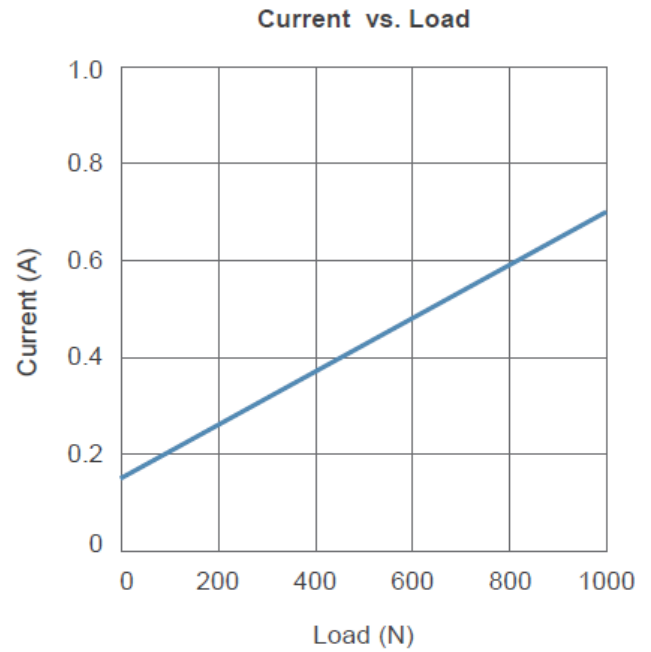
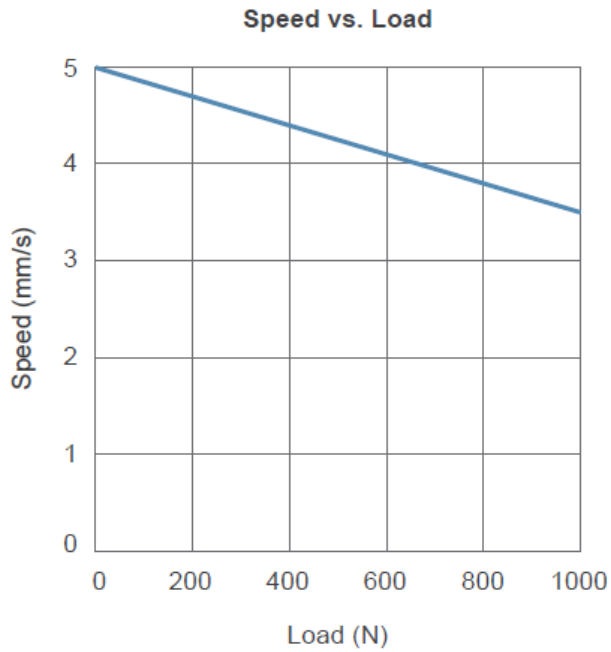
Input Voltage	24 Volts DC
Max force	-Push : 1000 N -Pull : 1000 N
Max. static load	1800 N
Stroke	-standard or tailor-made -Preset limit switches for stroke end limit
Speed	-Maximum 5.0 mm/sec without load -Maximum 3.5 mm/sec under full load
Material	Aluminium (tube and case)
IP protection level	IP65
Compatibility	TB / BCS1 / BCS2 / BCT2 / BC3T / BC4M
Duty cycle	10% (max. 2min. continuous operation in 18min.)
Ambient operation temperature	-20°C ~ +70°C
Duty cycle	10% max. 2min continuous operation in 18min

Options :

Fixation	Mouting bracket MB22 (Ø8mm)
----------	-----------------------------

PERFORMANCES

Model	Gear ratio	load max (N)	*Typical speed (mm/s)		*Typical current (A) @ 24V	
			No load	Full load	No load	Full load
V45	57:1	1 000	5.0	3.5	0.15	0.7

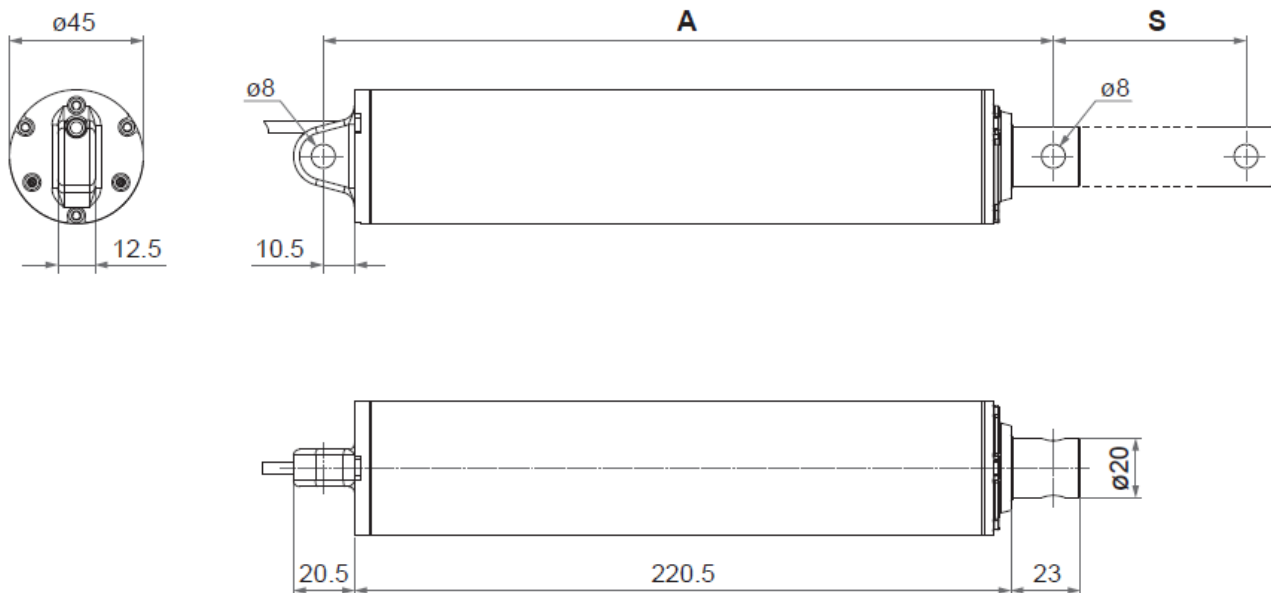


Remarks:

- * The typical speed or typical current means the average value neither upper limit nor lower limit. The performance curves are made with typical values.

DIMENSIONS

Unit: mm



Installation Dimension

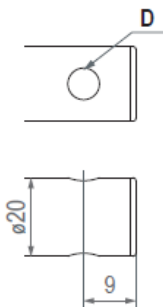
• Retracted length (A)

Front connector code	Stroke (S)					
	50	100	150	200	250	300
1	245	295	345	395	445	495
3	286	336	386	436	486	536
6	255.5	305.5	355.5	405.5	455.5	505.5

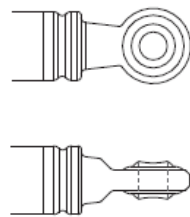
(Tolerance: $\pm 3\text{mm}$)

• Front Connector

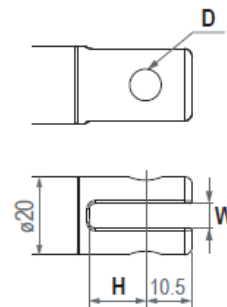
1: Drilled hole



3: Spherical rod eye

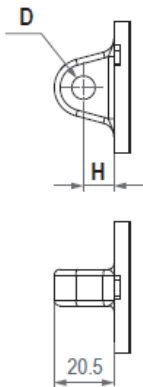


6: Plastic slot

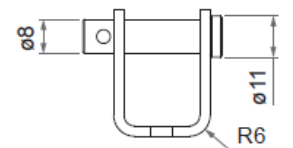
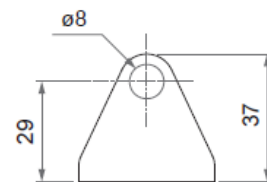
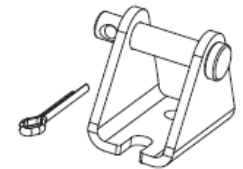
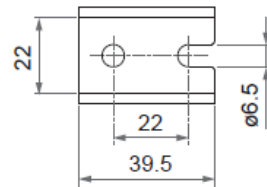


• Rear Connector

1: Metal



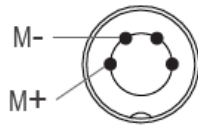
• Mounting bracket (MB22)



Front connector code	Diameter of pivot without bushing (D)	Slot width (W)	Depth (H)
1	$\varnothing 6.4, \varnothing 8, \varnothing 10$	N/A	N/A
3	$\varnothing 8$	N/A	N/A
6	$\varnothing 8, \varnothing 10$	6	15
Rear connector code			
1	$\varnothing 8$	N/A	10.5

CABLE CONNECTOR

- Without positioning sensor feedback



4-pin DIN plug

Note: Connect Pin (M+) to “+” & Pin (M-) to “-” of DC power, the actuator will extend.



WIRING

Wire definitions:

- Without positioning sensor feedback

Power	
Red	Black
M+	M-

Note: Connect Red (M+) to ‘+’ & Black (M-) to ‘-’ of DC power, the actuator will extend.

